

I TYPE BUTTERFLY VALVES PRODUCT DESCRIPTION



**Warning!**  
valve body, brackets, actuator and handle are sold individually.

TECHNICAL DATA	
Valve	
Max. Product Pressure	1000 kPa (10 bar)
Min. Product Pressure	Full vacuum
TemperatureRange	-10°C to +95°C
Actuator	
Max. Air Pressure	700 kPa (7 bar)
Min. Air Pressure, NC and NO	400 kPa (4 bar)
TemperatureRange	Minus 25°C to Plus +90°C
Air Consumption (Liters) -ø85mm	0,24 x p (bar)
Air Consumption (Liters) -ø133mm	0,95 x p (bar)
Weight	ø85 mm: 3 kg.-ø133 mm: 12 kg

**IMPLEMENTATION**  
Alfa Laval i-BFV is a hygienic Butterfly Valve which can be operated automatically or manually for use in stainless steel pipelines.

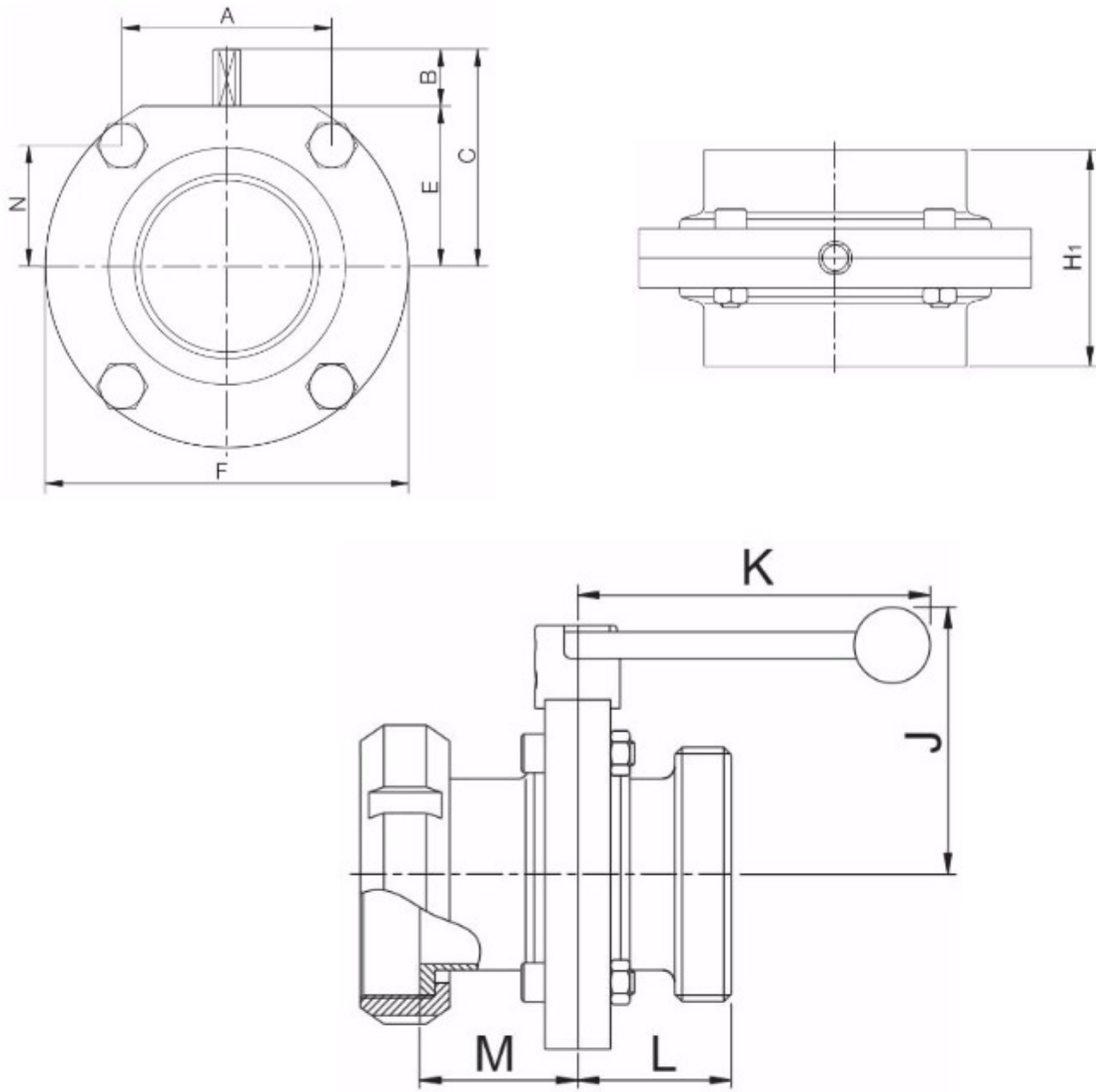
**OPERATION PRINCIPLES**  
Alfa Laval i-BFV is operated with a remote control via an actuator or manually via a handle. The actuator has three standard versions which are normally closed (NC), normally open (NO) and air/air-operated (A/A). The actuator has been designed to transform into 90° shaft rotation of the axial piston movement. When the valve disc comes into contact with the sealing ring of the butterfly valve, the torque of the actuator is increased. Manual operation handle mechanically locks the valve in open or closed position.

**STANDARD DESIGN**  
The valve consists of two half valve bodies, valve disc, disc shaft and sealing ring bearings. The valve is connected with screws and nuts. Two actuator sizes (ø85mm and ø133mm) cover all valve dimensions. The actuator has two versions, including LKLA and LKLA-T. The actuator is mounted on the valve with a bracket or screws. Manual operation handle is mounted on the valve with a head/block system and a screw. The valve has welding ends as a standard, but it may also be supplied with fittings.

**CONTROL EQUIPMENT**  
Control and indicator may be used with Alfa Laval i-BFV valve.

MATERIAL QUALITY	
Valve	
Parts that come into contact with the product	1.4301 (304)
Other Parts	1.4301 (304)
Gasket Types	Silicone (Q), EPDM, FPM,HNBR, PFA
Bearings for Valve Disc	PVDF
Surface Quality	Semi-lustrous
Actuator	
Actuator body	1.4307 (304L)
Piston	Bronze for ø85 mm
Gaskets	Nitrile (NBR)
Shield for Switches	Noryl (PPO)

VALVE DIMENSIONS



VALVE DIMENSIONS

Ebat/Size	25mm	38mm	51mm	63.5mm	76.1mm	101.6mm
A	42.0	42.0	42.0	61.0	79.5	106.0
B	15.5	16.7	16.6	17.5	16.6	16.0
C	49.0	49.0	58.5	69.5	73.5	93.0
OD	25.6	38.6	51.6	64.1	76.6	102.2
ID	22.5	35.5	48.5	60.5	72.0	97.6
t	1.55	1.55	1.55	1.8	2.3	2.3
E	32.5	32.5	42.0	52.0	57.0	77.0
F	78.0	78.0	94.0	117.0	132.0	169.0
G	8.0	8.0	8.0	8.0	10.0	12.0
H1	47.0	47.0	52.0	54.0	62.0	80.0
H2	83.0	83.0	92.0	92.0	114.0	132.0
J	82.0	82.0	92.0	102.0	107.0	127.0
K	120.0	120.0	120.0	120.0	162.0	162.0
N	26,5	26,5	36	40,5	43,5	50
Ağırlık/Wgt	0.9	1	1.2	1.8	2.6	4.1